



SAN BEATO

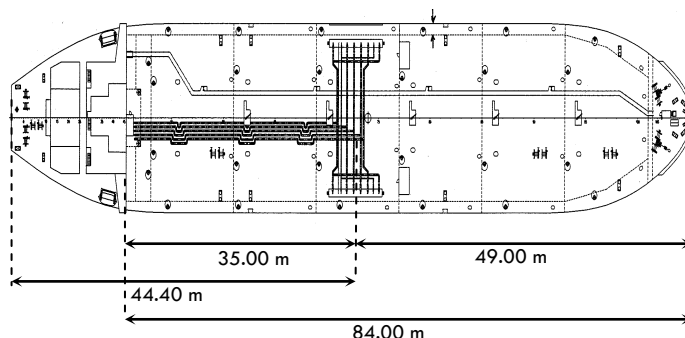
Oil/Asphalt Tanker
6603 mt deadweight
2010



NAME : SAN BEATO	HULL NO. : GMS-110
TYPE : Oil/Asphalt Tanker	IMO NO. : 9531765
TYPE OF HULL : Double Hull	MMSI: 269032000
OWNER : San Beato Schifffahrt AG	CLASS SOCIETY : Bureau Veritas
FLAG : Swiss	CLASS ID NUMBER : 13919G
PORT OF REGISTRY : Basel	CLASS NOTATION : I✕HULL✕MACH - Oil Tanker, flash pt>60°
BUILDER'S YARD : Geo Marine Shipyard - Korea	C, Asphalt carrier; Unr. navig., COMF-NOISE 3, COMF-VIB 3✕
BUILT : April 2010	AUT-UMS; MON-SHAFT;Cleanship(C);Inwatersurvey;VCS
TECHNICAL OPERATOR: ABC Maritime	P&I CLUB : North of England P & I Association Ltd
LAST DRY DOCK: April 2015	GMDSS AREA : A1-A2-A3
CALL SIGN : HBLC	

DIMENSIONS & TONNAGE

		CONDITION	SUMMER	WINTER	TROPICAL	SBT
LOA	110.20	DWT	6603	6365.5	6813.5	2871.5
LBP	103.08	DISPLACEMENT	9918.1	9680.1	10158	6186.1
GRT	5832	DRAFT	6.713	6.573	6.85	4.40
NRT	1749	FREE BOARD	3.31	3.45	3.17	5.58
SUEZ TONNAGE	4571.66	FWA (mm)	140	140	140	140
MOULDED BREADTH	18.20	AIR DRAFT	30.82	30.96	30.68	25.0
MOULDED DEPTH	10	TPC	17.3	17.41	17.1	12.05
KEEL TO MASTHEAD	37.403	HEIGHT MANIFOLD	3.78	9.92	3.64	7.48
LIGHT SHIP PARALLEL BODY	45.9	ABOVE WATERLINE				
NORMAL BALLAST PARALLEL BODY	65.3					
PARALLEL BODY AT SDWT	71.4					

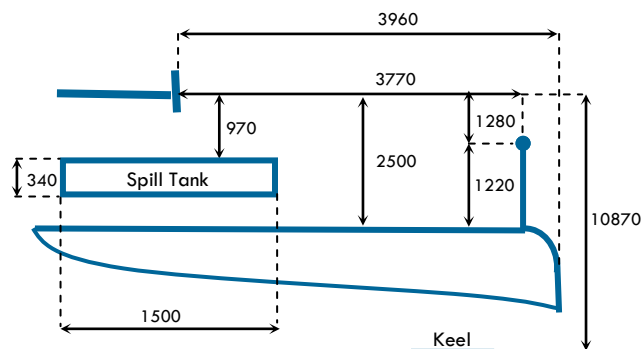
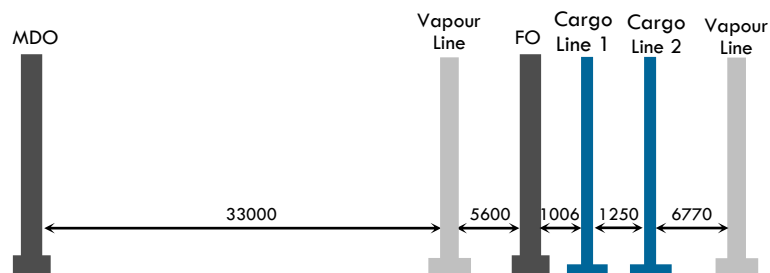


CARGO SYSTEM PARTICULARS

MAX RATE LOADING	500 m3/h
MAX RATE DISCHARGING	400 m3/h
MAX ALLOW PRESSURE CARGO LINE	7 bar
P/V - VALVES MAX VENTING CAPACITY	900 m3/h
P/V - VALVE OPENING PRESSURE	200 mbar
P/V - VALVE VACUUM SETTING	-35 mbar

NUMBER OF SEGREGATIONS	2
CARGO MANIFOLDS	2 x 10"
CARGO TANK'S COATING	Not coated
CARGO HEATING	Mild steel coils
CARGO PUMPS	2 x 400 m3/h
STRIPPING	N/A

MANIFOLDS ARRANGEMENT - in millimeters -



TANKS' CAPACITIES

CARGO - 98%

Tank	1 P&S / 2 P&S	3 P&S / 4 P&S
Volume in m3	1214.5 / 1632	1622.5 / 1622
Total	6091	

BALLAST - 100%

APT	FPT	1 P&S	2 P&S	3 P&S	4 P&S
126	272	661	469	606	493
2627					

FUEL OIL TANKS CAPACITY

VOLUME 98%

HFO STORAGE TK 1P	188.2
HFO STORAGE TK 1S	188.2
HFO STORAGE TK 2P	76.4
HFO STORAGE TK 2S	103.1
HFO SERVICE TK P&S	23.8
HFO SETTLING TK P&S	20.7
TOTAL	600.4

DIESEL OIL TANKS CAPACITY

VOLUME 98%

DO STORAGE TK S	29.8
DO SERVICE TK P	15.4
MGO STORAGE TK P	29.8
MGO SERVICE TK P	14.5
TOTAL	76.3

FRESH WATER TANKS CAPACITY

VOLUME 100%

FW TK P	63.5
FW TK S	61.9
TOTAL	125.4

LUB OIL TANKS CAPACITY

VOLUME 98%

FO DRAIN TK P	4.9
S/T LO DR. TK C	3.7
LO DRAIN TK S	4.6
THERMAL OIL TK P	8.1
TOTAL	21.3

ADDITIONAL INFORMATION

MAIN ENGINE	1 x HHI Korea 9H 25/33P (Himsen) - 2610 kW @ 900 rpm
AUXILIARY ENGINES	2 x HHI H17/28 - 535 kW @ 900 rpm +
EMERGENCY DIESEL GENERATOR	1 x Cummins STX - 100 kW @ 1800 rpm
PROPELLER	1 x CPP - 4 blades - Berg (S)
BOW THRUSTER	1 x Kawasaki - 280 kW
MAIN AIR COMPRESSOR	2 x Hatlapa-L-50 - 30 bars
BILGE WATER SEPARATOR	GRS-20 EB - Capacity 2m3/h
AUXILIARY BOILER	HTB-80 H - Heating capacity 930 kW
INCINERATOR PLANT	GS-20 IR - 180 000 kCal/h
SEWAGE TREATMENT UNIT	ISS-25 - 1.5 m3/day
INERT GAS SYSTEM	N/A
TOP UP GENERATOR	N/A



Rue Perdtemps 1
CH-1260 Nyon Switzerland

Last update: 24/07/15

Tel: +41(0)22 365 71 00
Fax: +41(0)22 365 71 11

www.abcmaritime.ch
info@abcmaritime.ch

N.B.: all particulars are given in good faith, but are not guaranteed.

